

PEA-15(Phospho Ser116) Polyclonal Antibody

Description

Product type	Primary Antibody
Code	BT-AP12918
Host	Rabbit
Isotype	IgG
Size	20ul, 50ul, 100ul
Immunogen	The antiserum was produced against synthesized peptide derived from human PEA-15 around the phosphorylation site of Ser116. AA range:81-130
Mol wt	15040
Species reactivity	Human, Mouse, Rat, Monkey
Clonality	Polyclonal
Recommended application	WB, IHC-p, IF, ELISA
Concentration	1 mg/ml
Full name	Astrocytic phosphoprotein PEA-15
Synonyms	Astrocytic phosphoprotein PEA-15; PEA15; Astrocytic phosphoprotein PEA-15; 15 kDa phosphoprotein enriched in astrocytes; Phosphoprotein enriched in diabetes; PED

This product is for research use only, not for use in human, therapeutic or diagnostic procedure.

Background

This gene encodes a death effector domain-containing protein that functions as a negative regulator of apoptosis. The encoded protein is an endogenous substrate for protein kinase C. This protein is also overexpressed in type 2 diabetes mellitus, where it may contribute to insulin resistance in glucose uptake. Alternative splicing results in multiple transcript variants.

Recommended Dilution

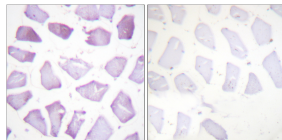
WB: 1: 500 - 1: 2000

IHC-p: 1: 100 - 1: 300

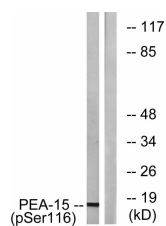
ELISA: 1: 5000

Not yet tested in other applications.

Images

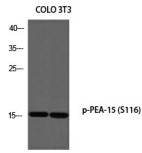


Immunohistochemistry analysis of paraffin-embedded human skeletal muscle, using PEA-15 (Phospho-Ser116) Antibody. The picture on the right is blocked with the phospho peptide.



Western blot analysis of COLO 3T3 using p-PEA-15 (S116) antibody. Antibody was diluted at 1:500

Western blot analysis of lysates from COS7 cells treated with INSULIN 0.01U/ML 15', using PEA-15 (Phospho-Ser116) Antibody. The lane on the right is blocked with the phospho peptide.



Storage

-20°C for 1 year

501 Changsheng S Rd, Nanhu Dist, Jiaxing, Zhejiang, China

Tel: 86 21 31007137 | E-mail: save@bt-laboratory.com | www.bt-laboratory.com