

SYCM Rabbit Polyclonal Antibody

Description

Product type	Primary Antibody
Code	BT-AP12921
Host	Rabbit
Isotype	IgG
Size	20ul, 50ul, 100ul
Immunogen	Synthesized peptide derived from human SYCM
Mol wt	N/A
Species reactivity	Human, Mouse
Clonality	Polyclonal
Recommended application	WB
Concentration	1 mg/ml
Full name	SYCM
Synonyms	SYCM; Probable cysteine--tRNA ligase; mitochondrial; EC 6.1.1.16; CysteinyI-tRNA synthetase; CysRS

This product is for research use only, not for use in human, therapeutic or diagnostic procedure.

Background

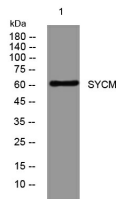
This gene encodes a putative member of the class I family of aminoacyl-tRNA synthetases. These enzymes play a critical role in protein biosynthesis by charging tRNAs with their cognate amino acids. This protein is encoded by the nuclear genome but is likely to be imported to the mitochondrion where it is thought to catalyze the ligation of cysteine to tRNA molecules. A splice-site mutation in this gene has been associated with a novel progressive myoclonic epilepsy disease with similar symptoms to MERRF syndrome.

Recommended Dilution

WB: 1: 500 - 1: 2000

Not yet tested in other applications.

Images



Western blot analysis of lysates from 3T3 cells, primary antibody was diluted at 1:1000, 4°C overnight

Storage

-20°C for 1 year