

## Per2(Phospho Ser662) Polyclonal Antibody

### Description

<b>Product type</b>	Primary Antibody
<b>Code</b>	BT-AP12937
<b>Host</b>	Rabbit
<b>Isotype</b>	IgG
<b>Size</b>	20ul, 50ul, 100ul
<b>Immunogen</b>	The antiserum was produced against synthesized peptide derived from human Period Circadian Protein 2 around the phosphorylation site of Ser662. AA range:636-685
<b>Mol wt</b>	136579
<b>Species reactivity</b>	Human, Mouse
<b>Clonality</b>	Polyclonal
<b>Recommended application</b>	WB, IHC-p, IF, ELISA
<b>Concentration</b>	1 mg/ml
<b>Full name</b>	Period circadian protein homolog 2
<b>Synonyms</b>	Period circadian protein homolog 2; PER2; KIAA0347; Period circadian protein homolog 2; hPER2; Circadian clock protein PERIOD 2

**This product is for research use only, not for use in human, therapeutic or diagnostic procedure.**

### Background

This gene is a member of the Period family of genes and is expressed in a circadian pattern in the suprachiasmatic nucleus, the primary circadian pacemaker in the mammalian brain. Genes in this family encode components of the circadian rhythms of locomotor activity, metabolism, and behavior. This gene is upregulated by CLOCK/ARNTL heterodimers but then represses this upregulation in a feedback loop using PER/CRY heterodimers to interact with CLOCK/ARNTL. Polymorphisms in this gene may increase the risk of getting certain cancers and have been linked to sleep disorders.

### Recommended Dilution

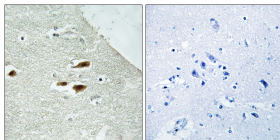
WB: 1: 500 - 1: 2000

IHC-p: 1: 100 - 1: 300

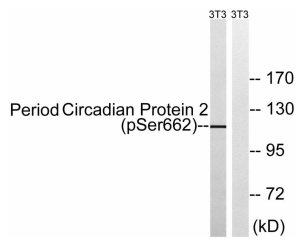
ELISA: 1: 5000

Not yet tested in other applications.

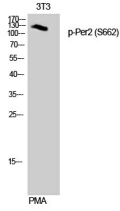
### Images



Immunohistochemistry analysis of paraffin-embedded human brain, using Period Circadian Protein 2 (Phospho-Ser662) Antibody. The picture on the right is blocked with the phospho peptide.



Western Blot analysis of 3T3 cells using Phospho-Per2 (S662) Polyclonal Antibody diluted at 1:500



Western blot analysis of lysates from NIH/3T3 cells treated with PMA 125ng/ml 30', using Period Circadian Protein 2 (Phospho-Ser662) Antibody. The lane on the right is blocked with the phospho peptide.

### Storage

-20°C for 1 year

501 Changsheng S Rd, Nanhu Dist, Jiaxing, Zhejiang, China

Tel: 86 21 31007137 | E-mail: [save@bt-laboratory.com](mailto:save@bt-laboratory.com) | [www.bt-laboratory.com](http://www.bt-laboratory.com)