

PFK-2 car(Phospho Ser483) Polyclonal Antibody

Description

Product type	Primary Antibody
Code	BT-AP12963
Host	Rabbit
Isotype	IgG
Size	20ul, 50ul, 100ul
Immunogen	The antiserum was produced against synthesized peptide derived from human PFKFB2 around the phosphorylation site of Ser483. AA range:451-500
Mol wt	58477
Species reactivity	Human, Mouse, Rat
Clonality	Polyclonal
Recommended application	WB, IHC-p, IF, ELISA
Concentration	1 mg/ml
Full name	6-phosphofructo-2-kinase/fructose-2,6-bisphosphatase 2
Synonyms	6-phosphofructo-2-kinase/fructose-2,6-bisphosphatase 2; PFKFB2; 6-phosphofructo-2-kinase/fructose-2,6-bisphosphatase 2; 6PF-2-K/Fru-2,6-P2ase 2; PFK/FBPase 2; 6PF-2-K/Fru-2,6-P2ase heart-type isozyme

This product is for research use only, not for use in human, therapeutic or diagnostic procedure.

Background

The protein encoded by this gene is involved in both the synthesis and degradation of fructose-2,6-bisphosphate, a regulatory molecule that controls glycolysis in eukaryotes. The encoded protein has a 6-phosphofructo-2-kinase activity that catalyzes the synthesis of fructose-2,6-bisphosphate, and a fructose-2,6-bisphosphatase activity that catalyzes the degradation of fructose-2,6-bisphosphate. This protein regulates fructose-2,6-bisphosphate levels in the heart, while a related enzyme encoded by a different gene regulates fructose-2,6-bisphosphate levels in the liver and muscle. This enzyme functions as a homodimer. Two transcript variants encoding two different isoforms have been found for this gene.

Recommended Dilution

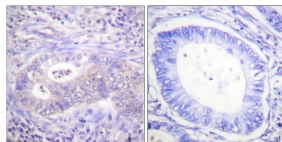
WB: 1: 500 - 1: 2000

IHC-p: 1: 100 - 1: 300

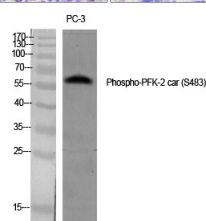
ELISA: 1: 40000

Not yet tested in other applications.

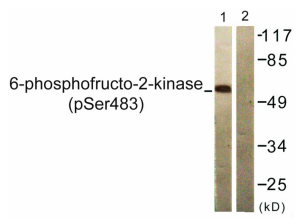
Images



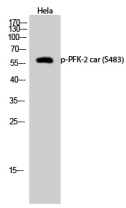
Immunohistochemistry analysis of paraffin-embedded human colon carcinoma, using PFKFB2 (Phospho-Ser483) Antibody. The picture on the right is blocked with the phospho peptide.



Western Blot analysis of various cells using Phospho-PFK-2 car (S483) Polyclonal Antibody diluted at 1:1000



Western Blot analysis of HeLa cells using Phospho-PFK-2 car (S483) Polyclonal Antibody diluted at 1:1000



Western blot analysis of lysates from 293 cells treated with Heat shock, using PFKFB2 (Phospho-Ser483) Antibody. The lane on the right is blocked with the phospho peptide.

Storage

-20°C for 1 year

501 Changsheng S Rd, Nanhu Dist, Jiaxing, Zhejiang, China

Tel: 86 21 31007137 | E-mail: save@bt-laboratory.com | www.bt-laboratory.com