

PGRP4 Polyclonal Antibody

Description

Product type	Primary Antibody
Code	BT-AP12982
Host	Rabbit
Isotype	IgG
Size	20ul, 50ul, 100ul
Immunogen	Synthesized peptide derived from part region of human protein
Mol wt	N/A
Species reactivity	Human, Mouse
Clonality	Polyclonal
Recommended application	WB, ELISA
Concentration	1 mg/ml
Full name	Peptidoglycan recognition protein 4
Synonyms	Peptidoglycan recognition protein 4 ;Peptidoglycan recognition protein I-beta;PGLYRPIbeta;PGRP-I-beta;Peptidoglycan recognition protein intermediate beta

This product is for research use only, not for use in human, therapeutic or diagnostic procedure.

Background

Summary: This gene encodes a peptidoglycan recognition protein, which belongs to the N-acetylmuramoyl-L-alanine amidase 2 family. These proteins are part of the innate immune system and recognize peptidoglycan, a ubiquitous component of bacterial cell walls. This antimicrobial protein binds to murein peptidoglycans of Gram-positive bacteria.

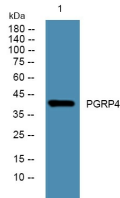
Recommended Dilution

WB: 1: 500 - 1: 2000

ELISA: 1: 5000 - 1: 20000

Not yet tested in other applications.

Images



Western blot analysis of lysates from SW480 cells, primary antibody was diluted at 1:1000, 4°C overnight

Storage

-20°C for 1 year