

## PHX2B Polyclonal Antibody

### Description

<b>Product type</b>	Primary Antibody
<b>Code</b>	BT-AP13004
<b>Host</b>	Rabbit
<b>Isotype</b>	IgG
<b>Size</b>	20ul, 50ul, 100ul
<b>Immunogen</b>	Synthesized peptide derived from human protein . at AA range: 140-220
<b>Mol wt</b>	N/A
<b>Species reactivity</b>	Human, Mouse
<b>Clonality</b>	Polyclonal
<b>Recommended application</b>	WB, ELISA
<b>Concentration</b>	1 mg/ml
<b>Full name</b>	Paired mesoderm homeobox protein 2B
<b>Synonyms</b>	Paired mesoderm homeobox protein 2B ;Neuroblastoma Phox;NBPhox;PHOX2B homeodomain protein;Paired-like homeobox 2B

This product is for research use only, not for use in human, therapeutic or diagnostic procedure.

### Background

The DNA-associated protein encoded by this gene is a member of the paired family of homeobox proteins localized to the nucleus. The protein functions as a transcription factor involved in the development of several major noradrenergic neuron populations and the determination of neurotransmitter phenotype. The gene product is linked to enhancement of second messenger-mediated activation of the dopamine beta-hydroxylase, c-fos promoters and several enhancers, including cyclic amp-response element and serum-response element. Expansion of a 20 amino acid polyalanine tract in this protein by 5-13 aa has been associated with congenital central hypoventilation syndrome.

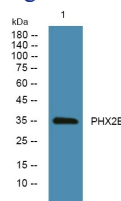
### Recommended Dilution

WB: 1: 500 - 1: 2000

ELISA: 1: 5000 - 1: 20000

Not yet tested in other applications.

### Images



Western blot analysis of lysates from KB cells, primary antibody was diluted at 1:1000, 4°C overnight

### Storage

-20°C for 1 year