

PI5L1 Polyclonal Antibody

Description

Product type	Primary Antibody
Code	BT-AP13029
Host	Rabbit
Isotype	IgG
Size	20ul, 50ul, 100ul
Immunogen	Synthesized peptide derived from human protein . at AA range: 270-350
Mol wt	N/A
Species reactivity	Human, Mouse
Clonality	Polyclonal
Recommended application	WB, ELISA
Concentration	1 mg/ml
Full name	Phosphatidylinositol 4-phosphate 5-kinase-like protein 1
Synonyms	Phosphatidylinositol 4-phosphate 5-kinase-like protein 1 ;PI;4P 5-kinase-like protein 1;PtdIns;4P-5-kinase-like protein 1;EC 2.7.1.68

This product is for research use only, not for use in human, therapeutic or diagnostic procedure.

Background

PIP5KL1 is a phosphoinositide kinase-like protein that lacks intrinsic lipid kinase activity but associates with type I PIPKs (see PIP5K1A; MIM 603275) and may play a role in localization of PIPK activity (Chang et al., 2004

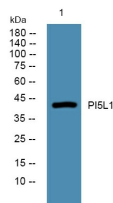
Recommended Dilution

WB: 1: 500 - 1: 2000

ELISA: 1: 5000 - 1: 20000

Not yet tested in other applications.

Images



Western blot analysis of lysates from Jarkat cells, primary antibody was diluted at 1:1000, 4°C overnight

Storage

-20°C for 1 year