

TM138 Rabbit Polyclonal Antibody

Description

Product type	Primary Antibody
Code	BT-AP13056
Host	Rabbit
Isotype	IgG
Size	20ul, 50ul, 100ul
Immunogen	Synthesized peptide derived from human TM138
Mol wt	17820
Species reactivity	Human, Mouse, Rat
Clonality	Polyclonal
Recommended application	WB
Concentration	1 mg/ml
Full name	TM138
Synonyms	TM138

This product is for research use only, not for use in human, therapeutic or diagnostic procedure.

Background

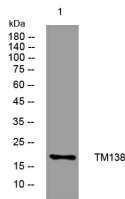
This gene encodes a multi-pass transmembrane protein. Reduced expression of this gene in mouse fibroblasts causes short cilia and failure of ciliogenesis. Expression of this gene is tightly coordinated with expression of the neighboring gene TMEM216. Mutations in this gene are associated with the autosomal recessive neurodevelopmental disorder Joubert Syndrome. Alternative splicing results in multiple transcript variants.

Recommended Dilution

WB: 1: 500 - 1: 2000

Not yet tested in other applications.

Images



Western blot analysis of lysates from HeLa cells, primary antibody was diluted at 1:1000, 4°C overnight

Storage

-20°C for 1 year