

PIP Polyclonal Antibody

Description

Product type	Primary Antibody
Code	BT-AP13059
Host	Rabbit
Isotype	IgG
Size	20ul, 50ul, 100ul
Immunogen	Synthesized peptide derived from human protein . at AA range: 11-60
Mol wt	N/A
Species reactivity	Human, Mouse, Rat
Clonality	Polyclonal
Recommended application	WB, ELISA
Concentration	1 mg/ml
Full name	Prolactin-inducible protein
Synonyms	Prolactin-inducible protein ;Gross cystic disease fluid protein 15;GCDFP-15;Prolactin-induced protein;Secretory actin-binding protein;SABP;gp17

This product is for research use only, not for use in human, therapeutic or diagnostic procedure.

Background

induction:By prolactin and androgen; inhibited by estrogen.,Belongs to the PIP family.,subunit:Monomer. Interacts with AZGP1.,tissue specificity:Expressed in pathological conditions of the mammary gland and in several exocrine tissues, such as the lacrimal, salivary, and sweat glands.,

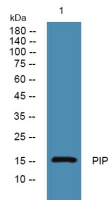
Recommended Dilution

WB: 1: 500 - 1: 2000

ELISA: 1: 5000 - 1: 20000

Not yet tested in other applications.

Images



Western blot analysis of lysates from K562 cells, primary antibody was diluted at 1:1000, 4°C overnight

Storage

-20°C for 1 year