

## TM165 Rabbit Polyclonal Antibody

### Description

Product type	Primary Antibody
Code	BT-AP13067
Host	Rabbit
Isotype	IgG
Size	20ul, 50ul, 100ul
Immunogen	Synthesized peptide derived from human TM165
Mol wt	35640
Species reactivity	Human, Mouse, Rat
Clonality	Polyclonal
Recommended application	WB
Concentration	1 mg/ml
Full name	TM165
Synonyms	TM165

This product is for research use only, not for use in human, therapeutic or diagnostic procedure.

### Background

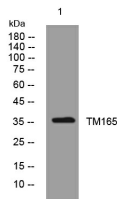
This gene encodes a predicted transmembrane protein with a perinuclear Golgi-like distribution in fibroblasts. Mutations in this gene are associated with the autosomal recessive disorder congenital disorder of glycosylation| type IIk. Knockdown of this gene's expression causes decreased sialylation in HEK cells and suggests this gene plays a role in terminal Golgi glycosylation. Alternative splicing results in multiple transcript variants.

### Recommended Dilution

WB: 1: 500 - 1: 2000

Not yet tested in other applications.

### Images



Western blot analysis of lysates from HeLa cells, primary antibody was diluted at 1:1000, 4°C overnight

### Storage

-20°C for 1 year