

PKD1/2/3(Phospho Ser738/S742) Polyclonal Antibody

Description

Product type	Primary Antibody
Code	BT-AP13119
Host	Rabbit
Isotype	IgG
Size	20ul, 50ul, 100ul
Immunogen	The antiserum was produced against synthesized peptide derived from human PKD1/2/3/PKC mu around the phosphorylation site of Ser738 and Ser742. AA range:706-755
Mol wt	101888
Species reactivity	Human, Mouse, Rat
Clonality	Polyclonal
Recommended application	WB, IHC-p, IF, ELISA
Concentration	1 mg/ml
Full name	Serine/threonine-protein kinase D1/2/3
Synonyms	Serine/threonine-protein kinase D1/2/3; PRKD1; PKD; PKD1; PRKCM; Serine/threonine-protein kinase D1; Protein kinase C mu type; Protein kinase D; nPKC-D1; nPKC-mu; PRKD2; PKD2; HSPC187; Serine/threonine-protein kinase D2; nPKC-D2; PRKD3; EPK2; PRKCN; Serine/threonine-protein kinas

This product is for research use only, not for use in human, therapeutic or diagnostic procedure.

Background

PRKD1 is a serine/threonine kinase that regulates a variety of cellular functions, including membrane receptor signaling, transport at the Golgi, protection from oxidative stress at the mitochondria, gene transcription, and regulation of cell shape, motility, and adhesion (summary by Eiseler et al., 2009)

Recommended Dilution

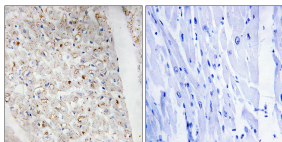
WB: 1: 500 - 1: 2000

IHC-p: 1: 100 - 1: 300

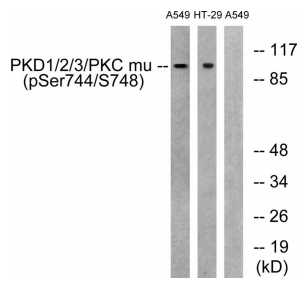
ELISA: 1: 5000

Not yet tested in other applications.

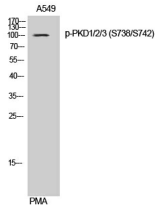
Images



Immunohistochemistry analysis of paraffin-embedded human heart, using PKD1/2/3/PKC mu (Phospho-Ser738+Ser742) Antibody. The picture on the right is blocked with the phospho peptide.



Western Blot analysis of A549 cells using Phospho-PKD1/2/3 (S738/S742) Polyclonal Antibody



Western blot analysis of lysates from A549 cells treated with PMA 125ng/ml 30' and HT29 cells treated with serum 20% 15', using PKD1/2/3/PKC mu (Phospho-Ser738+Ser742) Antibody. The lane on the right is blocked with the phospho peptide.

Storage

-20°C for 1 year

501 Changsheng S Rd, Nanhu Dist, Jiaxing, Zhejiang, China

Tel: 86 21 31007137 | E-mail: save@bt-laboratory.com | www.bt-laboratory.com