

## PKN1 Polyclonal Antibody

### Description

|                                |  |
|--------------------------------|--|
| <b>Product type</b>            | Primary Antibody   |
| <b>Code</b>                    | BT-AP13130   |
| <b>Host</b>                    | Rabbit   |
| <b>Isotype</b>                 | IgG  |
| <b>Size</b>                    | 20ul, 50ul, 100ul  |
| <b>Immunogen</b>               | Synthesized peptide derived from human protein . at AA range: 720-800  |
| <b>Mol wt</b>                  | N/A  |
| <b>Species reactivity</b>      | Human, Mouse, Rat  |
| <b>Clonality</b>               | Polyclonal   |
| <b>Recommended application</b> | WB, ELISA  |
| <b>Concentration</b>           | 1 mg/ml  |
| <b>Full name</b>               | Serine/threonine-protein kinase N1   |
| <b>Synonyms</b>                | Serine/threonine-protein kinase N1 ;EC 2.7.11.13;Protease-activated kinase 1;PAK-1;Protein kinase C-like 1;Protein kinase C-like PKN;Protein kinase PKN-alpha;Protein-kinase C-related kinas |

This product is for research use only, not for use in human, therapeutic or diagnostic procedure.

### Background

The protein encoded by this gene belongs to the protein kinase C superfamily. This kinase is activated by Rho family of small G proteins and may mediate the Rho-dependent signaling pathway. This kinase can be activated by phospholipids and by limited proteolysis. The 3-phosphoinositide dependent protein kinase-1 (PDPK1/PDK1) is reported to phosphorylate this kinase, which may mediate insulin signals to the actin cytoskeleton. The proteolytic activation of this kinase by caspase-3 or related proteases during apoptosis suggests its role in signal transduction related to apoptosis. Alternatively spliced transcript variants encoding distinct isoforms have been observed.

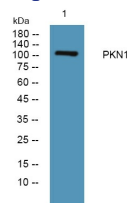
### Recommended Dilution

WB: 1: 500 - 1: 2000

ELISA: 1: 5000 - 1: 20000

Not yet tested in other applications.

### Images



Western blot analysis of lysates from SH-SY5Y cells, primary antibody was diluted at 1:1000, 4°C overnight

### Storage

-20°C for 1 year