

## PKNX1 Polyclonal Antibody

### Description

<b>Product type</b>	Primary Antibody
<b>Code</b>	BT-AP13132
<b>Host</b>	Rabbit
<b>Isotype</b>	IgG
<b>Size</b>	20ul, 50ul, 100ul
<b>Immunogen</b>	Synthesized peptide derived from part region of human protein
<b>Mol wt</b>	N/A
<b>Species reactivity</b>	Human, Mouse
<b>Clonality</b>	Polyclonal
<b>Recommended application</b>	WB, ELISA
<b>Concentration</b>	1 mg/ml
<b>Full name</b>	Homeobox protein PKNOX1
<b>Synonyms</b>	Homeobox protein PKNOX1 ;Homeobox protein PREP-1;PBX/knotted homeobox 1

**This product is for research use only, not for use in human, therapeutic or diagnostic procedure.**

### Background

Belongs to the TALE/MEIS homeobox family.,Contains 1 homeobox DNA-binding domain.,tissue specificity:Ubiquitous. Isoform 2 is expressed in all examined tissues except in bone marrow.,

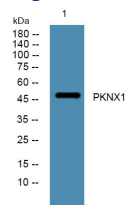
### Recommended Dilution

WB: 1: 500 - 1: 2000

ELISA: 1: 5000 - 1: 20000

Not yet tested in other applications.

### Images



Western blot analysis of lysates from SH-SY5Y cells, primary antibody was diluted at 1:1000, 4°C overnight

### Storage

-20°C for 1 year