

Plant-actin Polyclonal Antibody

Description

Product type	Primary Antibody
Code	BT-AP13146
Host	Rabbit
Isotype	IgG
Size	20ul, 50uL, 100ul
Immunogen	Recombinant Protein of Plant-actin
Mol wt	N/A
Species reactivity	Arabidopsis
Clonality	Polyclonal
Recommended application	WB
Concentration	N/A
Full name	N/A
Synonyms	N/A

This product is for research use only, not for use in human, therapeutic or diagnostic procedure.

Background

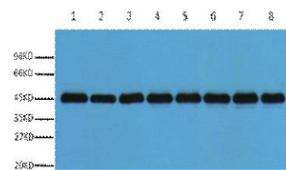
Arabidopsis has a complex actin gene family that encodes six protein subclasses. One of the classes is represented by the proteins ACT2 and ACT8, which are similar proteins, but have different flanking sequences, introns and silent nucleotide positions in codons. ACT8 is expressed in root, stems, leaves, flowers, pollen and siliques.

Recommended Dilution

WB: 1: 3000

Not yet tested in other applications.

Images



Western blot analysis of *Nicotiana tabacum* leaf (1), *Nicotiana tabacum* root (2), *Nicotiana* seed (3), *Oryza sativa* flower (4), *Oryza sativa* seed (5), *Oryza sativa* leaf (6), *Hordeum vulgare* seed (7), *Hordeum vulgare* leaves (8), diluted at 1:3000. Secondary antibody was diluted at 1:20000

Storage

-20°C for 1 year

501 Changsheng S Rd, Nanhui Dist, Jiaxing, Zhejiang, China

Tel: 86 21 31007137 | E-mail: save@bt-laboratory.com | www.bt-laboratory.com