

PLB(Phospho Ser16/T17) Polyclonal Antibody

Description

Product type	Primary Antibody
Code	BT-AP13150
Host	Rabbit
Isotype	IgG
Size	20ul, 50ul, 100ul
Immunogen	The antiserum was produced against synthesized peptide derived from human PLB around the phosphorylation site of Ser16 and Thr17. AA range:1-50
Mol wt	6109
Species reactivity	Human, Mouse, Rat
Clonality	Polyclonal
Recommended application	IF, ICC, ELISA
Concentration	1 mg/ml
Full name	Cardiac phospholamban
Synonyms	Cardiac phospholamban; PLN; PLB; Cardiac phospholamban; PLB

This product is for research use only, not for use in human, therapeutic or diagnostic procedure.

Background

The protein encoded by this gene is found as a pentamer and is a major substrate for the cAMP-dependent protein kinase in cardiac muscle. The encoded protein is an inhibitor of cardiac muscle sarcoplasmic reticulum Ca(2+)-ATPase in the unphosphorylated state, but inhibition is relieved upon phosphorylation of the protein. The subsequent activation of the Ca(2+) pump leads to enhanced muscle relaxation rates, thereby contributing to the inotropic response elicited in heart by beta-agonists. The encoded protein is a key regulator of cardiac diastolic function. Mutations in this gene are a cause of inherited human dilated cardiomyopathy with refractory congestive heart failure, and also familial hypertrophic cardiomyopathy.

Recommended Dilution

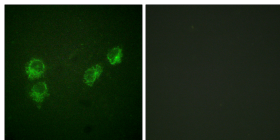
IF: 1: 200 - 1: 1000

ICC: 1: 200 - 1: 1000

ELISA: 1: 10000

Not yet tested in other applications.

Images



Immunofluorescence analysis of HUVEC cells, using PLB (Phospho-Ser16+Thr17) Antibody. The picture on the right is blocked with the phospho peptide.

Storage

-20°C for 1 year