

PLCA Polyclonal Antibody

Description

Product type	Primary Antibody
Code	BT-AP13164
Host	Rabbit
Isotype	IgG
Size	20ul, 50ul, 100ul
Immunogen	Synthesized peptide derived from human protein . at AA range: 150-230
Mol wt	N/A
Species reactivity	Human, Mouse
Clonality	Polyclonal
Recommended application	WB, ELISA
Concentration	1 mg/ml
Full name	1-acyl-sn-glycerol-3-phosphate acyltransferase alpha
Synonyms	1-acyl-sn-glycerol-3-phosphate acyltransferase alpha ;EC 2.3.1.51;1-acylglycerol-3-phosphate O-acyltransferase 1;1-AGP acyltransferase 1;1-AGPAT 1;Lysophosphatidic acid acyltransferase alpha

This product is for research use only, not for use in human, therapeutic or diagnostic procedure.

Background

This gene encodes an enzyme that converts lysophosphatidic acid (LPA) into phosphatidic acid (PA). LPA and PA are two phospholipids involved in signal transduction and in lipid biosynthesis in cells. This enzyme localizes to the endoplasmic reticulum. This gene is located in the class III region of the human major histocompatibility complex. Alternative splicing results in two transcript variants encoding the same protein.

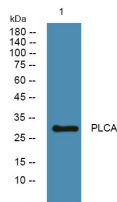
Recommended Dilution

WB: 1: 500 - 1: 2000

ELISA: 1: 5000 - 1: 20000

Not yet tested in other applications.

Images



Western blot analysis of lysates from PC12 cells, primary antibody was diluted at 1:1000, 4°C overnight

Storage

-20°C for 1 year