

TRI41 Rabbit Polyclonal Antibody

Description

| | |
|-------------------------|--|
| Product type | Primary Antibody |
| Code | BT-AP13176 |
| Host | Rabbit |
| Isotype | IgG |
| Size | 20ul, 50ul, 100ul |
| Immunogen | Synthesized peptide derived from human TRI41 |
| Mol wt | 69300 |
| Species reactivity | Human, Mouse |
| Clonality | Polyclonal |
| Recommended application | WB |
| Concentration | 1 mg/ml |
| Full name | TRI41 |
| Synonyms | TRI41 |

This product is for research use only, not for use in human, therapeutic or diagnostic procedure.

Background

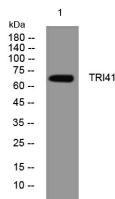
This gene encodes a member of the tripartite motif (TRIM) family. The TRIM family is characterized by a signature motif composed of a RING finger| one or more B-box domains| and a coiled-coil region. This encoded protein may play a role in protein kinase C signaling. Multiple transcript variants encoding different isoforms have been found for this gene.

Recommended Dilution

WB: 1: 500 - 1: 2000

Not yet tested in other applications.

Images



Western blot analysis of lysates from MCF-7 cells, primary antibody was diluted at 1:1000, 4°C overnight

Storage

-20°C for 1 year

501 Changsheng S Rd, Nanhu Dist, Jiaxing, Zhejiang, China

Tel: 86 21 31007137 | E-mail: save@bt-laboratory.com | www.bt-laboratory.com