

PLS1 Polyclonal Antibody

Description

Product type	Primary Antibody
Code	BT-AP13182
Host	Rabbit
Isotype	IgG
Size	20ul, 50ul, 100ul
Immunogen	Synthesized peptide derived from human protein . at AA range: 170-250
Mol wt	N/A
Species reactivity	Human, Rat, Mouse
Clonality	Polyclonal
Recommended application	WB, ELISA
Concentration	1 mg/ml
Full name	Phospholipid scramblase 1
Synonyms	Phospholipid scramblase 1 ;PL scramblase 1;Ca;2+-dependent phospholipid scramblase 1;Erythrocyte phospholipid scramblase;MmTRA1b

This product is for research use only, not for use in human, therapeutic or diagnostic procedure.

Background

cofactor:Calcium.,May mediate accelerated ATP-independent bidirectional transbilayer migration of phospholipids upon binding calcium ions that results in a loss of phospholipid asymmetry in the plasma membrane. May play a central role in the initiation of fibrin clot formation, in the activation of mast cells and in the recognition of apoptotic and injured cells by the reticuloendothelial system.,May play a role in the antiviral response of interferon (IFN) by amplifying and enhancing the IFN response through increased expression of select subset of potent antiviral genes. May contribute to cytokine-regulated cell proliferation and differentiation.,induction:By phosphorylation by PKC. Induced by INFB1 in response to a viral infection.,online information:Scramblase entry,PTM:Known to be palmitoylated at one, yet undefined, site.,Belongs to the phospholipid scramblase family.,subunit:Interacts with ABL.,tissue specificity:Expressed in platelets, erythrocyte membranes, lymphocytes, spleen, thymus, prostate, testis, uterus, intestine, colon, heart, placenta, lung, liver, kidney and pancreas. Not detected in brain and skeletal muscle.,

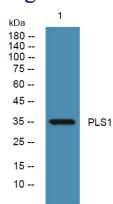
Recommended Dilution

WB: 1: 500 - 1: 2000

ELISA: 1: 5000 - 1: 20000

Not yet tested in other applications.

Images



Western blot analysis of lysates from DU145 cells, primary antibody was diluted at 1:1000, 4°C overnight

Storage

-20°C for 1 year

501 Changsheng S Rd, Nanhu Dist, Jiaxing, Zhejiang, China

Tel: 86 21 31007137 | E-mail: save@bt-laboratory.com | www.bt-laboratory.com