

PLS2 Polyclonal Antibody

Description

Product type	Primary Antibody
Code	BT-AP13183
Host	Rabbit
Isotype	IgG
Size	20ul, 50ul, 100ul
Immunogen	Synthesized peptide derived from human protein . at AA range: 90-170
Mol wt	N/A
Species reactivity	Human, Rat, Mouse
Clonality	Polyclonal
Recommended application	WB, ELISA
Concentration	1 mg/ml
Full name	Phospholipid scramblase 2
Synonyms	Phospholipid scramblase 2 ;PL scramblase 2;Ca ²⁺ -dependent phospholipid scramblase 2

This product is for research use only, not for use in human, therapeutic or diagnostic procedure.

Background

This gene encodes a member of the phospholipid scramblase family. Phospholipid scramblases are membrane proteins that mediate calcium-dependent, non-specific movement of plasma membrane phospholipids and phosphatidylserine exposure. The encoded protein contains a low affinity calcium binding motif and may play a role in blood coagulation and apoptosis. Alternatively spliced transcript variants encoding multiple isoforms have been observed for this gene.

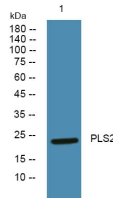
Recommended Dilution

WB: 1: 500 - 1: 2000

ELISA: 1: 5000 - 1: 20000

Not yet tested in other applications.

Images



Western blot analysis of lysates from PC12 cells, primary antibody was diluted at 1:1000, 4°C overnight

Storage

-20°C for 1 year