

## PLS4 Polyclonal Antibody

### Description

<b>Product type</b>	Primary Antibody
<b>Code</b>	BT-AP13185
<b>Host</b>	Rabbit
<b>Isotype</b>	IgG
<b>Size</b>	20ul, 50ul, 100ul
<b>Immunogen</b>	Synthesized peptide derived from human protein . at AA range: 190-270
<b>Mol wt</b>	N/A
<b>Species reactivity</b>	Human, Rat, Mouse
<b>Clonality</b>	Polyclonal
<b>Recommended application</b>	WB, ELISA
<b>Concentration</b>	1 mg/ml
<b>Full name</b>	Phospholipid scramblase 4
<b>Synonyms</b>	Phospholipid scramblase 4 ;PL scramblase 4;Ca <sub>2</sub> <sup>+</sup> -dependent phospholipid scramblase 4;Cell growth-inhibiting gene 43 protein;TRA1

This product is for research use only, not for use in human, therapeutic or diagnostic procedure.

### Background

cofactor:Calcium.,May mediate accelerated ATP-independent bidirectional transbilayer migration of phospholipids upon binding calcium ions that results in a loss of phospholipid asymmetry in the plasma membrane. May play a central role in the initiation of fibrin clot formation, in the activation of mast cells and in the recognition of apoptotic and injured cells by the reticuloendothelial system.,Belongs to the phospholipid scramblase family.,tissue specificity:Expressed in heart, brain, placenta, lung, liver, kidney, pancreas, spleen, thymus, prostate, testis, uterus, small intestine and colon. Not detected in peripheral blood lymphocytes.,

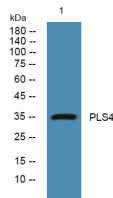
### Recommended Dilution

WB: 1: 500 - 1: 2000

ELISA: 1: 5000 - 1: 20000

Not yet tested in other applications.

### Images



Western blot analysis of lysates from PC12 cells, primary antibody was diluted at 1:1000, 4°C overnight

### Storage

-20°C for 1 year