

TRM6 Rabbit Polyclonal Antibody

Description

Product type	Primary Antibody
Code	BT-AP13212
Host	Rabbit
Isotype	IgG
Size	20ul, 50ul, 100ul
Immunogen	Synthesized peptide derived from human TRM6
Mol wt	54670
Species reactivity	Human, Mouse
Clonality	Polyclonal
Recommended application	WB
Concentration	1 mg/ml
Full name	TRM6
Synonyms	TRM6

This product is for research use only, not for use in human, therapeutic or diagnostic procedure.

Background

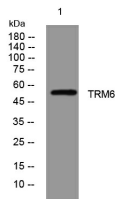
This gene encodes a member of the tRNA methyltransferase 6 protein family. A similar protein in yeast is part of a two component methyltransferase which is involved in the posttranslational modification that produces the modified nucleoside 1-methyladenosine in tRNAs. Modified 1-methyladenosine influences initiator methionine stability and may be involved in the replication of human immunodeficiency virus type 1. Alternative splicing results in multiple transcript variants.

Recommended Dilution

WB: 1: 500 - 1: 2000

Not yet tested in other applications.

Images



Western blot analysis of lysates from MCF-7 cells, primary antibody was diluted at 1:1000, 4°C overnight

Storage

-20°C for 1 year