

TRPM4 Rabbit Polyclonal Antibody

Description

Product type	Primary Antibody
Code	BT-AP13219
Host	Rabbit
Isotype	IgG
Size	20ul, 50ul, 100ul
Immunogen	Synthesized peptide derived from human TRPM4
Mol wt	133540
Species reactivity	Human, Mouse, Rat
Clonality	Polyclonal
Recommended application	WB
Concentration	1 mg/ml
Full name	TRPM4
Synonyms	TRPM4

This product is for research use only, not for use in human, therapeutic or diagnostic procedure.

Background

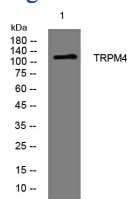
The protein encoded by this gene is a calcium-activated nonselective ion channel that mediates transport of monovalent cations across membranes| thereby depolarizing the membrane. The activity of the encoded protein increases with increasing intracellular calcium concentration| but this channel does not transport calcium.

Recommended Dilution

WB: 1: 500 - 1: 2000

Not yet tested in other applications.

Images



Western blot analysis of lysates from HpeG2 cells, primary antibody was diluted at 1:1000, 4°C overnight

Storage

-20°C for 1 year

501 Changsheng S Rd, Nanhu Dist, Jiaxing, Zhejiang, China

Tel: 86 21 31007137 | E-mail: save@bt-laboratory.com | www.bt-laboratory.com