

PON1 Polyclonal Antibody

Description

Product type	Primary Antibody
Code	BT-AP13226
Host	Rabbit
Isotype	IgG
Size	20ul, 50ul, 100ul
Immunogen	The antiserum was produced against synthesized peptide derived from the Internal region of human PON1. AA range:51-100
Mol wt	N/A
Species reactivity	Human, Rat, Mouse
Clonality	Polyclonal
Recommended application	IHC-p, IF, ELISA
Concentration	1 mg/ml
Full name	Serum paraoxonase/arylesterase 1
Synonyms	Serum paraoxonase/arylesterase 1 ;PON 1;EC 3.1.1.2;EC 3.1.1.81;EC 3.1.8.1;Aromatic esterase 1;A-esterase 1;K-45;Serum aryldialkylphosphatase 1; Serum paraoxonase/arylesterase 1; PON 1; EC 3.1.1.2; EC 3.1.1.81; EC 3.1.8.1; Aromatic esterase 1; A-esterase 1; K-45; Serum aryldialkylphosphatase 1

This product is for research use only, not for use in human, therapeutic or diagnostic procedure.

Background

The enzyme encoded by this gene is an arylesterase that mainly hydrolyzes paroxon to produce p-nitrophenol. Paroxon is an organophosphorus anticholinesterase compound that is produced in vivo by oxidation of the insecticide parathion. Polymorphisms in this gene are a risk factor in coronary artery disease. The gene is found in a cluster of three related paraoxonase genes at 7q21.3.

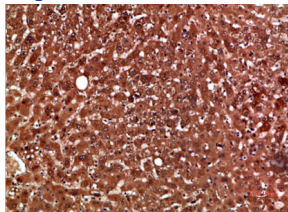
Recommended Dilution

IHC-p: 1: 50 - 1: 200

ELISA: 1: 10000 - 1: 20000

Not yet tested in other applications.

Images



Immunohistochemical analysis of paraffin-embedded human-liver, antibody was diluted at 1:200

Storage

-20°C for 1 year