

PP1 alpha(Phospho Thr320) Polyclonal Antibody

Description

Product type	Primary Antibody
Code	BT-AP13239
Host	Rabbit
Isotype	IgG
Size	20ul, 50ul, 100ul
Immunogen	The antiserum was produced against synthesized peptide derived from human PP1-alpha around the phosphorylation site of Thr320. AA range:281-330
Mol wt	37512
Species reactivity	Human, Mouse, Rat
Clonality	Polyclonal
Recommended application	IHC-p, IF, ELISA
Concentration	1 mg/ml
Full name	Serine/threonine-protein phosphatase PP1-alpha catalytic subunit
Synonyms	Serine/threonine-protein phosphatase PP1-alpha catalytic subunit; PPP1CA; PPP1A; Serine/threonine-protein phosphatase PP1-alpha catalytic subunit; PP-1A

This product is for research use only, not for use in human, therapeutic or diagnostic procedure.

Background

The protein encoded by this gene is one of the three catalytic subunits of protein phosphatase 1 (PP1). PP1 is a serine/threonine specific protein phosphatase known to be involved in the regulation of a variety of cellular processes, such as cell division, glycogen metabolism, muscle contractility, protein synthesis, and HIV-1 viral transcription. Increased PP1 activity has been observed in the end stage of heart failure. Studies in both human and mice suggest that PP1 is an important regulator of cardiac function. Mouse studies also suggest that PP1 functions as a suppressor of learning and memory. Three alternatively spliced transcript variants encoding different isoforms have been found for this gene.

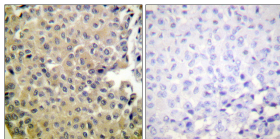
Recommended Dilution

IHC-p: 1: 100 - 1: 300

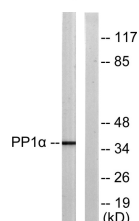
ELISA: 1: 10000

Not yet tested in other applications.

Images



Immunohistochemistry analysis of paraffin-embedded human breast carcinoma, using PP1-alpha (Phospho-Thr320) Antibody. The picture on the right is blocked with the phospho peptide.



Western blot analysis of PP1-alpha (Phospho-Thr320) Antibody. The lane on the right is blocked with the PP1-alpha (Phospho-Thr320) peptide.

Storage

-20°C for 1 year

501 Changsheng S Rd, Nanhu Dist, Jiaxing, Zhejiang, China

Tel: 86 21 31007137 | E-mail: save@bt-laboratory.com | www.bt-laboratory.com