

## TTBK1 Rabbit Polyclonal Antibody

### Description

Product type	Primary Antibody
Code	BT-AP13242
Host	Rabbit
Isotype	IgG
Size	20ul, 50ul, 100ul
Immunogen	Synthesized peptide derived from human TTBK1
Mol wt	145310
Species reactivity	Human, Mouse
Clonality	Polyclonal
Recommended application	WB
Concentration	1 mg/ml
Full name	TTBK1
Synonyms	TTBK1

This product is for research use only, not for use in human, therapeutic or diagnostic procedure.

### Background

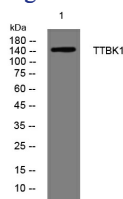
Summary: This gene belongs to the casein kinase 1 superfamily. The encoded protein is a neuron-specific serine/threonine and tyrosine kinase which regulates phosphorylation of tau, a protein that associates with microtubule assemblies and stabilizes them. Genetic variants in this gene are associated with Alzheimer's disease.

### Recommended Dilution

WB: 1: 500 - 1: 2000

Not yet tested in other applications.

### Images



Western blot analysis of lysates from U2OS cells, primary antibody was diluted at 1:1000, 4°C overnight

### Storage

-20°C for 1 year

501 Changsheng S Rd, Nanhu Dist, Jiaxing, Zhejiang, China

Tel: 86 21 31007137 | E-mail: [save@bt-laboratory.com](mailto:save@bt-laboratory.com) | [www.bt-laboratory.com](http://www.bt-laboratory.com)