

PPR1A Polyclonal Antibody

Description

Product type	Primary Antibody
Code	BT-AP13271
Host	Rabbit
Isotype	IgG
Size	20ul, 50ul, 100ul
Immunogen	Synthesized peptide derived from human protein . at AA range: 40-120
Mol wt	N/A
Species reactivity	Human, Mouse, Rat
Clonality	Polyclonal
Recommended application	WB, ELISA
Concentration	1 mg/ml
Full name	Protein phosphatase 1 regulatory subunit 1A
Synonyms	Protein phosphatase 1 regulatory subunit 1A ;Protein phosphatase inhibitor 1;I-1;IPP-1

This product is for research use only, not for use in human, therapeutic or diagnostic procedure.

Background

Inhibitor of protein-phosphatase 1. This protein may be important in hormonal control of glycogen metabolism. Hormones that elevate intracellular cAMP increase I-1 activity in many tissues. I-1 activation may impose cAMP control over proteins that are not directly phosphorylated by PKA. Following a rise in intracellular calcium, I-1 is inactivated by calcineurin (or PP2B). Does not inhibit type-2 phosphatases.,PTM:Phosphorylation of Thr-35 is required for activity.,Belongs to the protein phosphatase inhibitor 1 family.,subunit:Interacts with PPP1R15A.,

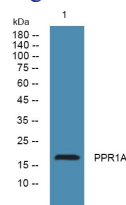
Recommended Dilution

WB: 1: 500 - 1: 2000

ELISA: 1: 5000 - 1: 20000

Not yet tested in other applications.

Images



Western blot analysis of lysates from SH-SY5Y cells, primary antibody was diluted at 1:1000, 4°C overnight

Storage

-20°C for 1 year