

PR(Phospho Ser294) Polyclonal Antibody

Description

Product type	Primary Antibody
Code	BT-AP13273
Host	Rabbit
Isotype	IgG
Size	20ul, 50ul, 100ul
Immunogen	The antiserum was produced against synthesized peptide derived from human Progesterone Receptor around the phosphorylation site of Ser294. AA range:261-310
Mol wt	98981
Species reactivity	Human, Mouse, Rat
Clonality	Polyclonal
Recommended application	WB, IF, ICC, ELISA
Concentration	1 mg/ml
Full name	Progesterone receptor
Synonyms	Progesterone receptor; PGR; NR3C3; Progesterone receptor; PR; Nuclear receptor subfamily 3 group C member 3

This product is for research use only, not for use in human, therapeutic or diagnostic procedure.

Background

This gene encodes a member of the steroid receptor superfamily. The encoded protein mediates the physiological effects of progesterone, which plays a central role in reproductive events associated with the establishment and maintenance of pregnancy. This gene uses two distinct promoters and translation start sites in the first exon to produce several transcript variants, both protein coding and non-protein coding. Two of the isoforms (A and B) are identical except for an additional 165 amino acids found in the N-terminus of isoform B and mediate their own response genes and physiologic effects with little overlap.

Recommended Dilution

WB: 1: 500 - 1: 2000

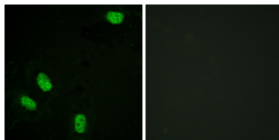
IF: 1: 200 - 1: 1000

ICC: 1: 200 - 1: 1000

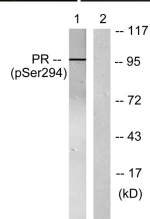
ELISA: 1: 5000

Not yet tested in other applications.

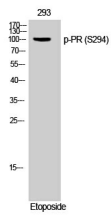
Images



Immunofluorescence analysis of HeLa cells, using Progesterone Receptor (Phospho-Ser294) Antibody. The picture on the right is blocked with the phospho peptide.



Western Blot analysis of 293 cells using Phospho-PR (S294) Polyclonal Antibody



Western blot analysis of lysates from 293 cells treated with Etoposide 25uM 60', using Progesterone Receptor (Phospho-Ser294) Antibody. The lane on the right is blocked with the phospho peptide.

Storage

-20°C for 1 year

501 Changsheng S Rd, Nanhu Dist, Jiaxing, Zhejiang, China

Tel: 86 21 31007137 | E-mail: save@bt-laboratory.com | www.bt-laboratory.com