

PRAS40(Phospho Thr246) Polyclonal Antibody

Description

Product type	Primary Antibody
Code	BT-AP13285
Host	Rabbit
Isotype	IgG
Size	20ul, 50ul, 100ul
Immunogen	The antiserum was produced against synthesized peptide derived from human Akt1 S1 around the phosphorylation site of Thr246. AA range:207-256
Mol wt	27383
Species reactivity	Human, Mouse, Rat
Clonality	Polyclonal
Recommended application	WB, IHC-p, IF, ELISA
Concentration	1 mg/ml
Full name	Proline-rich AKT1 substrate 1
Synonyms	Proline-rich AKT1 substrate 1; AKT1S1; PRAS40; Proline-rich AKT1 substrate 1; 40 kDa proline-rich AKT substrate

This product is for research use only, not for use in human, therapeutic or diagnostic procedure.

Background

AKT1S1 is a proline-rich substrate of AKT (MIM 164730) that binds 14-3-3 protein (see YWHAH, MIM 113508) when phosphorylated (Kovacina et al., 2003)

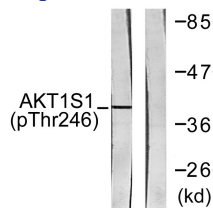
Recommended Dilution

WB: 1: 500 - 1: 2000

ELISA: 1: 10000

Not yet tested in other applications.

Images



Western blot analysis of lysates from HepG2 cells treated with PDGF 50ng/ml 30', using Akt1 S1 (Phospho-Thr246) Antibody. The lane on the right is blocked with the phospho peptide.

Storage

-20°C for 1 year