

## UBC12 Rabbit Polyclonal Antibody

### Description

Product type	Primary Antibody
Code	BT-AP13332
Host	Rabbit
Isotype	IgG
Size	20ul, 50ul, 100ul
Immunogen	Synthesized peptide derived from human UBC12
Mol wt	20130
Species reactivity	Human, Mouse
Clonality	Polyclonal
Recommended application	WB
Concentration	1 mg/ml
Full name	UBC12
Synonyms	UBC12

This product is for research use only, not for use in human, therapeutic or diagnostic procedure.

### Background

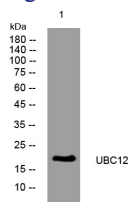
The modification of proteins with ubiquitin is an important cellular mechanism for targeting abnormal or short-lived proteins for degradation. Ubiquitination involves at least three classes of enzymes: ubiquitin-activating enzymes| or E1s| ubiquitin-conjugating enzymes| or E2s| and ubiquitin-protein ligases| or E3s. This gene encodes a member of the E2 ubiquitin-conjugating enzyme family. The encoded protein is linked with a ubiquitin-like protein| NEDD8| which can be conjugated to cellular proteins| such as Cdc53/culin.

### Recommended Dilution

WB: 1: 500 - 1: 2000

Not yet tested in other applications.

### Images



Western blot analysis of lysates from U2OS cells, primary antibody was diluted at 1:1000, 4°C overnight

### Storage

-20°C for 1 year