

PSYR Polyclonal Antibody

Description

Product type	Primary Antibody
Code	BT-AP13366
Host	Rabbit
Isotype	IgG
Size	20ul, 50ul, 100ul
Immunogen	Synthesized peptide derived from human protein . at AA range: 200-280
Mol wt	N/A
Species reactivity	Human, Mouse
Clonality	Polyclonal
Recommended application	WB, ELISA
Concentration	1 mg/ml
Full name	Psychosine receptor
Synonyms	Psychosine receptor ;G-protein coupled receptor 65;T-cell death-associated gene 8 protein

This product is for research use only, not for use in human, therapeutic or diagnostic procedure.

Background

Receptor for the glycosphingolipid psychosine (PSY) and several related glycosphingolipids. May have a role in activation-induced cell death or differentiation of T-cells.,Belongs to the G-protein coupled receptor 1 family.,tissue specificity:Predominantly expressed in thymus, spleen, lymph nodes, small intestine, lung, placenta and peripheral blood leukocytes.,

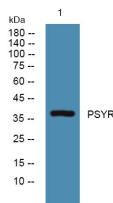
Recommended Dilution

WB: 1: 500 - 1: 2000

ELISA: 1: 5000 - 1: 20000

Not yet tested in other applications.

Images



Western blot analysis of lysates from DU145 cells, primary antibody was diluted at 1:1000, 4°C overnight

Storage

-20°C for 1 year