

PTEN(Phospho Ser380) Polyclonal Antibody

Description

Product type	Primary Antibody
Code	BT-AP13369
Host	Rabbit
Isotype	IgG
Size	20ul, 50ul, 100ul
Immunogen	The antiserum was produced against synthesized peptide derived from human PTEN around the phosphorylation site of Ser380. AA range:366-395
Mol wt	47166
Species reactivity	Human, Mouse, Rat
Clonality	Polyclonal
Recommended application	IHC-p, IF, ELISA
Concentration	1 mg/ml
Full name	Phosphatidylinositol 3,4,5-trisphosphate 3-phosphatase and dual-specificity protein phosphatase PTEN
Synonyms	Phosphatidylinositol 3,4,5-trisphosphate 3-phosphatase and dual-specificity protein phosphatase PTEN; PTEN; MMAC1; TEP1; Phosphatidylinositol 3; 4,5-trisphosphate 3-phosphatase and dual-specificity protein phosphatase PTEN; Mutated in multiple advanced cancers 1; Phosphatase and tensin homolog

This product is for research use only, not for use in human, therapeutic or diagnostic procedure.

Background

This gene was identified as a tumor suppressor that is mutated in a large number of cancers at high frequency. The protein encoded by this gene is a phosphatidylinositol-3,4,5-trisphosphate 3-phosphatase. It contains a tensin like domain as well as a catalytic domain similar to that of the dual specificity protein tyrosine phosphatases. Unlike most of the protein tyrosine phosphatases, this protein preferentially dephosphorylates phosphoinositide substrates. It negatively regulates intracellular levels of phosphatidylinositol-3,4,5-trisphosphate in cells and functions as a tumor suppressor by negatively regulating AKT/PKB signaling pathway. The use of a non-canonical (CUG) upstream initiation site produces a longer isoform that initiates translation with a leucine, and is thought to be preferentially associated with the mitochondrial inner membrane. This longer isoform may help regulate ener

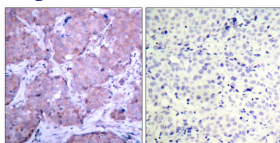
Recommended Dilution

IHC-p: 1: 100 - 1: 300

ELISA: 1: 10000

Not yet tested in other applications.

Images



Immunohistochemistry analysis of paraffin-embedded human breast cancer, using PTEN (Phospho-Ser380) Antibody. The picture on the right is blocked with the PTEN (Phospho-Ser380) peptide.

Storage

-20°C for 1 year