

PTP1B(Phospho Ser50) Polyclonal Antibody

Description

Product type	Primary Antibody
Code	BT-AP13389
Host	Rabbit
Isotype	IgG
Size	20ul, 50ul, 100ul
Immunogen	The antiserum was produced against synthesized peptide derived from human PTP1B around the phosphorylation site of Ser50. AA range:16-65
Mol wt	49967
Species reactivity	Human, Mouse, Rat, Monkey
Clonality	Polyclonal
Recommended application	WB, IHC-p, IF, ELISA
Concentration	1 mg/ml
Full name	Tyrosine-protein phosphatase non-receptor type 1
Synonyms	Tyrosine-protein phosphatase non-receptor type 1; PTPN1; PTP1B; Tyrosine-protein phosphatase non-receptor type 1; Protein-tyrosine phosphatase 1B; PTP-1B

This product is for research use only, not for use in human, therapeutic or diagnostic procedure.

Background

The protein encoded by this gene is the founding member of the protein tyrosine phosphatase (PTP) family, which was isolated and identified based on its enzymatic activity and amino acid sequence. PTPs catalyze the hydrolysis of the phosphate monoesters specifically on tyrosine residues. Members of the PTP family share a highly conserved catalytic motif, which is essential for the Catalytic activity. PTPs are known to be signaling molecules that regulate a variety of cellular processes including cell growth, differentiation, mitotic cycle, and oncogenic transformation. This PTP has been shown to act as a negative regulator of insulin signaling by dephosphorylating the phosphotyrosine residues of insulin receptor kinase. This PTP was also reported to dephosphorylate epidermal growth factor receptor kinase, as well as JAK2 and TYK2 kinases, which implicated the role of

Recommended Dilution

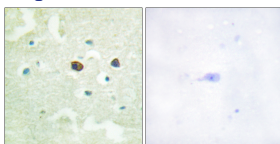
WB: 1: 500 - 1: 2000

IHC-p: 1: 100 - 1: 300

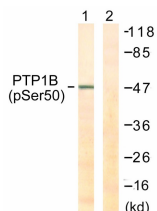
ELISA: 1: 40000

Not yet tested in other applications.

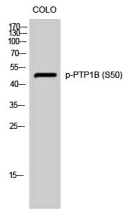
Images



Immunohistochemistry analysis of paraffin-embedded human brain, using PTP1B (Phospho-Ser50) Antibody. The picture on the right is blocked with the phospho peptide.



Western Blot analysis of COLO cells using Phospho-PTP1B (S50) Polyclonal Antibody diluted at 1:500



Western blot analysis of lysates from COS7 cells treated with UV 30', using PTP1B (Phospho-Ser50) Antibody. The lane on the right is blocked with the phospho peptide.

Storage

-20°C for 1 year

501 Changsheng S Rd, Nanhu Dist, Jiaxing, Zhejiang, China

Tel: 86 21 31007137 | E-mail: save@bt-laboratory.com | www.bt-laboratory.com