

PTP alpha(Phospho Tyr798) Polyclonal Antibody

Description

Product type	Primary Antibody
Code	BT-AP13403
Host	Rabbit
Isotype	IgG
Size	20ul, 50ul, 100ul
Immunogen	The antiserum was produced against synthesized peptide derived from human PTPRA around the phosphorylation site of Tyr798. AA range:753-802
Mol wt	90600
Species reactivity	Human, Mouse, Rat, Monkey
Clonality	Polyclonal
Recommended application	WB, ELISA
Concentration	1 mg/ml
Full name	Receptor-type tyrosine-protein phosphatase alpha
Synonyms	Receptor-type tyrosine-protein phosphatase alpha; PTPRA; PTPA; PTPRL2; Receptor-type tyrosine-protein phosphatase alpha; Protein-tyrosine phosphatase alpha; R-PTP-alpha

This product is for research use only, not for use in human, therapeutic or diagnostic procedure.

Background

The protein encoded by this gene is a member of the protein tyrosine phosphatase (PTP) family. PTPs are known to be signaling molecules that regulate a variety of cellular processes including cell growth, differentiation, mitotic cycle, and oncogenic transformation. This PTP contains an extracellular domain, a single transmembrane segment and two tandem intracytoplasmic catalytic domains, and thus represents a receptor-type PTP. This PTP has been shown to dephosphorylate and activate Src family tyrosine kinases, and is implicated in the regulation of integrin signaling, cell adhesion and proliferation. Three alternatively spliced variants of this gene, which encode two distinct isoforms, have been reported.

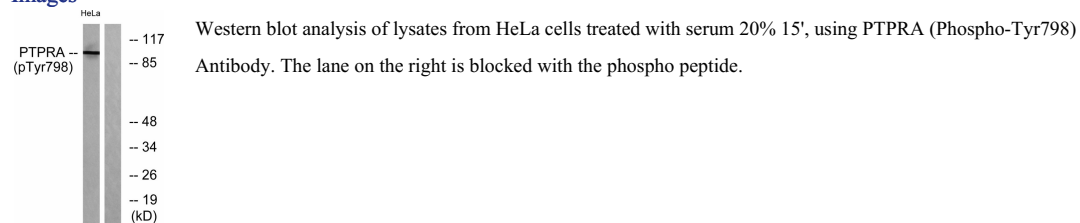
Recommended Dilution

WB: 1: 500 - 1: 2000

ELISA: 1: 5000

Not yet tested in other applications.

Images



Storage

-20°C for 1 year