

## R4RL2 Polyclonal Antibody

### Description

Product type	Primary Antibody
Code	BT-AP13434
Host	Rabbit
Isotype	IgG
Size	20ul, 50ul, 100ul
Immunogen	Synthesized peptide derived from human protein . at AA range: 290-370
Mol wt	N/A
Species reactivity	Human, Rat, Mouse
Clonality	Polyclonal
Recommended application	WB, ELISA
Concentration	1 mg/ml
Full name	Reticulon-4 receptor-like 2
Synonyms	Reticulon-4 receptor-like 2 ;Nogo receptor-like 3;Nogo-66 receptor homolog 1;Nogo-66 receptor-related protein 2;NgR2

This product is for research use only, not for use in human, therapeutic or diagnostic procedure.

### Background

May play a role in regulating axonal regeneration and plasticity in the adult central nervous system.,PTM:Undergoes zinc metalloproteinase-mediated ectodomain shedding in neuroblastoma cells; where BRE is released as a full-length ectodomain and an N-terminal fragment containing the leucine-rich repeat (LRR) region of the protein.,Belongs to the Nogo receptor family.,Contains 8 LRR (leucine-rich) repeats.,subcellular location:Localized to the surface of neurons, including axons.,tissue specificity:Highly expressed in brain and liver. Expressed at lower levels in kidney, mammary gland, placenta, skeletal muscle, spleen and thyroid.,

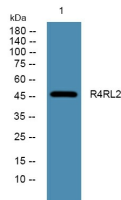
### Recommended Dilution

WB: 1: 500 - 1: 2000

ELISA: 1: 5000 - 1: 20000

Not yet tested in other applications.

### Images



Western blot analysis of lysates from K562 cells, primary antibody was diluted at 1:1000, 4°C overnight

### Storage

-20°C for 1 year