

## R51A1 Polyclonal Antibody

### Description

<b>Product type</b>	Primary Antibody
<b>Code</b>	BT-AP13435
<b>Host</b>	Rabbit
<b>Isotype</b>	IgG
<b>Size</b>	20ul, 50ul, 100ul
<b>Immunogen</b>	Synthesized peptide derived from human protein . at AA range: 90-170
<b>Mol wt</b>	N/A
<b>Species reactivity</b>	Human, Mouse
<b>Clonality</b>	Polyclonal
<b>Recommended application</b>	WB, ELISA
<b>Concentration</b>	1 mg/ml
<b>Full name</b>	RAD51-associated protein 1
<b>Synonyms</b>	RAD51-associated protein 1 ;RAD51-interacting protein

**This product is for research use only, not for use in human, therapeutic or diagnostic procedure.**

### Background

alternative products:Additional isoforms seem to exist,May participate in a common DNA damage response pathway associated with the activation of homologous recombination and double-strand break repair. Binds to single and double stranded DNA, and is capable of aggregating DNA. Also binds RNA.,PTM:Phosphorylated upon DNA damage, probably by ATM or ATR.,subcellular location:Colocalizes with RAD51 to multiple nuclear foci.,subunit:Isoform 2 interacts with RAD51.,tissue specificity:Highly expressed in testis and thymus. Lower levels in colon and small intestine. Little or no expression in spleen, prostate, ovary and peripheral blood leukocytes.,

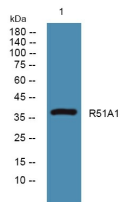
### Recommended Dilution

WB: 1: 500 - 1: 2000

ELISA: 1: 5000 - 1: 20000

Not yet tested in other applications.

### Images



Western blot analysis of lysates from PC12 cells, primary antibody was diluted at 1:1000, 4°C overnight

### Storage

-20°C for 1 year