

WBS22 Rabbit Polyclonal Antibody

Description

Product type	Primary Antibody
Code	BT-AP13463
Host	Rabbit
Isotype	IgG
Size	20ul, 50ul, 100ul
Immunogen	Synthesized peptide derived from human WBS22
Mol wt	30910
Species reactivity	Human, Mouse
Clonality	Polyclonal
Recommended application	WB
Concentration	1 mg/ml
Full name	WBS22
Synonyms	WBS22

This product is for research use only, not for use in human, therapeutic or diagnostic procedure.

Background

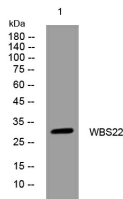
This gene encodes a protein containing a nuclear localization signal and an S-adenosyl-L-methionine binding motif typical of methyltransferases suggesting that the encoded protein may act on DNA methylation. This gene is deleted in Williams syndrome a multisystem developmental disorder caused by the deletion of contiguous genes at 7q11.23. Alternatively spliced transcript variants have been found.

Recommended Dilution

WB: 1: 500 - 1: 2000

Not yet tested in other applications.

Images



Western blot analysis of lysates from HeLa cells, primary antibody was diluted at 1:1000, 4°C overnight

Storage

-20°C for 1 year