

RAB15 Polyclonal Antibody

Description

Product type	Primary Antibody
Code	BT-AP13466
Host	Rabbit
Isotype	IgG
Size	20ul, 50ul, 100ul
Immunogen	Synthesized peptide derived from human protein . at AA range: 80-160
Mol wt	N/A
Species reactivity	Human, Mouse, Rat
Clonality	Polyclonal
Recommended application	WB, ELISA
Concentration	1 mg/ml
Full name	Ras-related protein Rab-15
Synonyms	Ras-related protein Rab-15

This product is for research use only, not for use in human, therapeutic or diagnostic procedure.

Background

May act in concert with RAB3A in regulating aspects of synaptic vesicle membrane flow within the nerve terminal.,Belongs to the small GTPase superfamily. Rab family.,subunit:The GTP bound form of RAB15 interacts with REP15.,

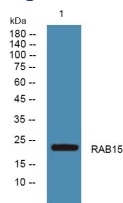
Recommended Dilution

WB: 1: 500 - 1: 2000

ELISA: 1: 5000 - 1: 20000

Not yet tested in other applications.

Images



Western blot analysis of lysates from A431 cells, primary antibody was diluted at 1:1000, 4°C overnight

Storage

-20°C for 1 year

501 Changsheng S Rd, Nanhu Dist, Jiaxing, Zhejiang, China

Tel: 86 21 31007137 | E-mail: save@bt-laboratory.com | www.bt-laboratory.com