

## RAB1A Polyclonal Antibody

### Description

Product type	Primary Antibody
Code	BT-AP13469
Host	Rabbit
Isotype	IgG
Size	20ul, 50ul, 100ul
Immunogen	Synthesized peptide derived from human protein . at AA range: 50-130
Mol wt	N/A
Species reactivity	Human, Rat, Mouse
Clonality	Polyclonal
Recommended application	WB, ELISA
Concentration	1 mg/ml
Full name	Ras-related protein Rab-1A
Synonyms	Ras-related protein Rab-1A ;YPT1-related protein

**This product is for research use only, not for use in human, therapeutic or diagnostic procedure.**

### Background

This gene encodes a member of the Ras superfamily of GTPases. Members of the gene family cycle between inactive GDP-bound and active GTP-bound forms. This small GTPase controls vesicle traffic from the endoplasmic reticulum to the Golgi apparatus. Multiple alternatively spliced transcript variants have been identified for this gene which encode different protein isoforms.

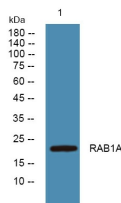
### Recommended Dilution

WB: 1: 500 - 1: 2000

ELISA: 1: 5000 - 1: 20000

Not yet tested in other applications.

### Images



Western blot analysis of lysates from DU145 cells, primary antibody was diluted at 1:1000, 4°C overnight

### Storage

-20°C for 1 year