

RAB32 Polyclonal Antibody

Description

Product type	Primary Antibody
Code	BT-AP13474
Host	Rabbit
Isotype	IgG
Size	20ul, 50ul, 100ul
Immunogen	Synthesized peptide derived from human protein . at AA range: 160-240
Mol wt	N/A
Species reactivity	Human, Mouse
Clonality	Polyclonal
Recommended application	WB, ELISA
Concentration	1 mg/ml
Full name	Ras-related protein Rab-32
Synonyms	Ras-related protein Rab-32

This product is for research use only, not for use in human, therapeutic or diagnostic procedure.

Background

The protein encoded by this gene anchors the type II regulatory subunit of protein kinase A to the mitochondrion and aids in mitochondrial fission. The encoded protein also appears to be involved in autophagy and melanosome secretion. Variations in this gene may be linked to leprosy.

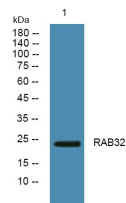
Recommended Dilution

WB: 1: 500 - 1: 2000

ELISA: 1: 5000 - 1: 20000

Not yet tested in other applications.

Images



Western blot analysis of lysates from SH-SY5Y cells, primary antibody was diluted at 1:1000, 4°C overnight

Storage

-20°C for 1 year