

RAB43 Polyclonal Antibody

Description

Product type	Primary Antibody
Code	BT-AP13477
Host	Rabbit
Isotype	IgG
Size	20ul, 50ul, 100ul
Immunogen	Synthesized peptide derived from human protein . at AA range: 90-170
Mol wt	N/A
Species reactivity	Human, Rat, Mouse
Clonality	Polyclonal
Recommended application	WB, ELISA
Concentration	1 mg/ml
Full name	Ras-related protein Rab-43
Synonyms	Ras-related protein Rab-43 ;Ras-related protein Rab-41

This product is for research use only, not for use in human, therapeutic or diagnostic procedure.

Background

Belongs to the small GTPase superfamily. Rab family.,tissue specificity:Widely expressed in brain, testis, lung, heart, ovary, colon, kidney, uterus and spleen but not in liver.,

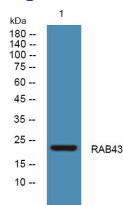
Recommended Dilution

WB: 1: 500 - 1: 2000

ELISA: 1: 5000 - 1: 20000

Not yet tested in other applications.

Images



Western blot analysis of lysates from K562 cells, primary antibody was diluted at 1:1000, 4°C overnight

Storage

-20°C for 1 year

501 Changsheng S Rd, Nanhu Dist, Jiaxing, Zhejiang, China

Tel: 86 21 31007137 | E-mail: save@bt-laboratory.com | www.bt-laboratory.com