

RAB9B Polyclonal Antibody

Description

| | |
|-------------------------|----------------------------------------------------------------------|
| Product type | Primary Antibody |
| Code | BT-AP13483 |
| Host | Rabbit |
| Isotype | IgG |
| Size | 20ul, 50ul, 100ul |
| Immunogen | Synthesized peptide derived from human protein . at AA range: 80-160 |
| Mol wt | N/A |
| Species reactivity | Human, Mouse |
| Clonality | Polyclonal |
| Recommended application | WB, ELISA |
| Concentration | 1 mg/ml |
| Full name | Ras-related protein Rab-9B |
| Synonyms | Ras-related protein Rab-9B ;Rab-9-like protein;Rab-9L |

This product is for research use only, not for use in human, therapeutic or diagnostic procedure.

Background

This gene encodes a member of a subfamily of RAS small guanosine triphosphate (GTP)-binding proteins that regulate membrane trafficking. The encoded protein may be involved in endosome-to-Golgi transport.

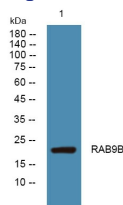
Recommended Dilution

WB: 1: 500 - 1: 2000

ELISA: 1: 5000 - 1: 20000

Not yet tested in other applications.

Images



Western blot analysis of lysates from Jarkat cells, primary antibody was diluted at 1:1000, 4°C overnight

Storage

-20°C for 1 year