

RAD1 Polyclonal Antibody

Description

Product type	Primary Antibody
Code	BT-AP13498
Host	Rabbit
Isotype	IgG
Size	20ul, 50ul, 100ul
Immunogen	Synthesized peptide derived from part region of human protein
Mol wt	N/A
Species reactivity	Human, Mouse
Clonality	Polyclonal
Recommended application	WB, ELISA
Concentration	1 mg/ml
Full name	Cell cycle checkpoint protein RAD1
Synonyms	Cell cycle checkpoint protein RAD1 ;hRAD1;EC 3.1.11.2;DNA repair exonuclease rad1 homolog;Rad1-like DNA damage checkpoint protein

This product is for research use only, not for use in human, therapeutic or diagnostic procedure.

Background

This gene encodes a component of a heterotrimeric cell cycle checkpoint complex, known as the 9-1-1 complex, that is activated to stop cell cycle progression in response to DNA damage or incomplete DNA replication. The 9-1-1 complex is recruited by RAD17 to affected sites where it may attract specialized DNA polymerases and other DNA repair effectors. Alternatively spliced transcript variants of this gene have been described.

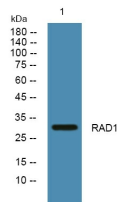
Recommended Dilution

WB: 1: 500 - 1: 2000

ELISA: 1: 5000 - 1: 20000

Not yet tested in other applications.

Images



Western blot analysis of lysates from DU145 cells, primary antibody was diluted at 1:1000, 4°C overnight

Storage

-20°C for 1 year