

WFKN2 Rabbit Polyclonal Antibody

Description

Product type	Primary Antibody
Code	BT-AP13508
Host	Rabbit
Isotype	IgG
Size	20ul, 50ul, 100ul
Immunogen	Synthesized peptide derived from human WFKN2
Mol wt	63360
Species reactivity	Human, Mouse
Clonality	Polyclonal
Recommended application	WB
Concentration	1 mg/ml
Full name	WFKN2
Synonyms	WFKN2

This product is for research use only, not for use in human, therapeutic or diagnostic procedure.

Background

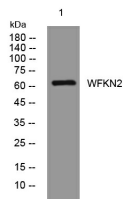
The WFIKKN1 protein contains a WAP domain| follistatin domain| immunoglobulin domain| two tandem Kunitz domains| and an NTR domain. This gene encodes a WFIKKN1-related protein which has the same domain organization as the WFIKKN1 protein. The WAP-type| follistatin type| Kunitz-type| and NTR-type protease inhibitory domains may control the action of multiple types of proteases.

Recommended Dilution

WB: 1: 500 - 1: 2000

Not yet tested in other applications.

Images



Western blot analysis of lysates from HeLa cells, primary antibody was diluted at 1:1000, 4°C overnight

Storage

-20°C for 1 year

501 Changsheng S Rd, Nanhu Dist, Jiaxing, Zhejiang, China

Tel: 86 21 31007137 | E-mail: save@bt-laboratory.com | www.bt-laboratory.com