

RAD9B Polyclonal Antibody

Description

Product type	Primary Antibody
Code	BT-AP13519
Host	Rabbit
Isotype	IgG
Size	20ul, 50ul, 100ul
Immunogen	Synthesized peptide derived from part region of human protein
Mol wt	N/A
Species reactivity	Human, Rat, Mouse
Clonality	Polyclonal
Recommended application	WB, ELISA
Concentration	1 mg/ml
Full name	Cell cycle checkpoint control protein RAD9B
Synonyms	Cell cycle checkpoint control protein RAD9B ;DNA repair exonuclease rad9 homolog B;hRAD9B

This product is for research use only, not for use in human, therapeutic or diagnostic procedure.

Background

Belongs to the rad9 family.,subunit:Interacts with HUS1, HUS1B, RAD1, RAD9A and RAD17.,tissue specificity:Expressed in testis and skeletal muscle.,

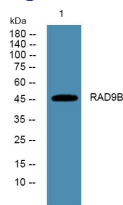
Recommended Dilution

WB: 1: 500 - 1: 2000

ELISA: 1: 5000 - 1: 20000

Not yet tested in other applications.

Images



Western blot analysis of lysates from PC12 cells, primary antibody was diluted at 1:1000, 4°C overnight

Storage

-20°C for 1 year

501 Changsheng S Rd, Nanhu Dist, Jiaxing, Zhejiang, China

Tel: 86 21 31007137 | E-mail: save@bt-laboratory.com | www.bt-laboratory.com