

## RANK Polyclonal Antibody

### Description

<b>Product type</b>	Primary Antibody
<b>Code</b>	BT-AP13564
<b>Host</b>	Rabbit
<b>Isotype</b>	IgG
<b>Size</b>	20ul, 50ul, 100ul
<b>Immunogen</b>	Synthetic peptide from human protein at AA range: 60-120
<b>Mol wt</b>	N/A
<b>Species reactivity</b>	Human, Mouse, Rat
<b>Clonality</b>	Polyclonal
<b>Recommended application</b>	WB, IHC-p, IF, ELISA
<b>Concentration</b>	1 mg/ml
<b>Full name</b>	Tumor necrosis factor receptor superfamily member 11A
<b>Synonyms</b>	Tumor necrosis factor receptor superfamily member 11A ;Osteoclast differentiation factor receptor;ODFR;Receptor activator of NF-KB;CD antigen CD265; Tumor necrosis factor receptor superfamily member 11A; Osteoclast differentiation factor receptor; ODFR; Receptor activator of NF-KB; CD antigen CD265

**This product is for research use only, not for use in human, therapeutic or diagnostic procedure.**

### Background

The protein encoded by this gene is a member of the TNF-receptor superfamily. This receptors can interact with various TRAF family proteins, through which this receptor induces the activation of NF-kappa B and MAPK8/JNK. This receptor and its ligand are important regulators of the interaction between T cells and dendritic cells. This receptor is also an essential mediator for osteoclast and lymph node development. Mutations at this locus have been associated with familial expansile osteolysis, autosomal recessive osteopetrosis, and Paget disease of bone. Alternatively spliced transcript variants have been described for this locus.

### Recommended Dilution

WB: 1: 500 - 1: 2000

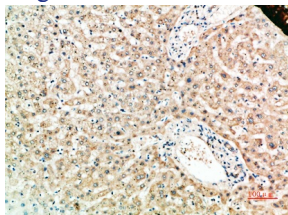
IHC-p: 1: 500 - 1: 200

ELISA: 1: 20000

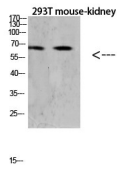
ELISA: 1: 10000 - 1: 20000

Not yet tested in other applications.

### Images



Immunohistochemical analysis of paraffin-embedded human-liver, antibody was diluted at 1:200



Western blot analysis of HeLa lysate, antibody was diluted at 1000. Secondary antibody was diluted at 1:20000

### Storage

-20°C for 1 year

501 Changsheng S Rd, Nanhu Dist, Jiaxing, Zhejiang, China

Tel: 86 21 31007137 | E-mail: [save@bt-laboratory.com](mailto:save@bt-laboratory.com) | [www.bt-laboratory.com](http://www.bt-laboratory.com)