

## RB33B Polyclonal Antibody

### Description

|                         |   |
|-------------------------|---|
| Product type            | Primary Antibody  |
| Code                    | BT-AP13610  |
| Host                    | Rabbit  |
| Isotype                 | IgG   |
| Size                    | 20ul, 50ul, 100ul   |
| Immunogen               | Synthesized peptide derived from human protein . at AA range: 100-180 |
| Mol wt                  | N/A   |
| Species reactivity      | Human, Mouse  |
| Clonality               | Polyclonal  |
| Recommended application | WB, ELISA   |
| Concentration           | 1 mg/ml   |
| Full name               | Ras-related protein Rab-33B   |
| Synonyms                | Ras-related protein Rab-33B   |

This product is for research use only, not for use in human, therapeutic or diagnostic procedure.

### Background

This gene encodes a small GTP-binding protein of the Rab GTPase family, whose members function in vesicle transport during protein secretion and endocytosis. Rab GTPases are active, membrane-associated proteins that recruit effector proteins in the GTP-bound state and inactive cytosolic proteins when in a GDP-bound state. The protein encoded by this gene is ubiquitously expressed and has been implicated in Golgi to endoplasmic reticulum cycling of Golgi enzymes. In addition, this protein regulates Golgi homeostasis and coordinates intra-Golgi retrograde trafficking. Allelic variants in this gene have been associated with Dyggve-Melchior-Clausen syndrome and Smith-McCort dysplasia 2, which are autosomal recessive spondyloepimetaphyseal dysplasias characterized by skeletal abnormalities.

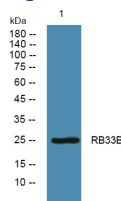
### Recommended Dilution

WB: 1: 500 - 1: 2000

ELISA: 1: 5000 - 1: 20000

Not yet tested in other applications.

### Images



Western blot analysis of lysates from A431 cells, primary antibody was diluted at 1:1000, 4°C overnight

### Storage

-20°C for 1 year