

RB40C Polyclonal Antibody

Description

Product type	Primary Antibody
Code	BT-AP13614
Host	Rabbit
Isotype	IgG
Size	20ul, 50ul, 100ul
Immunogen	Synthesized peptide derived from human protein . at AA range: 50-130
Mol wt	N/A
Species reactivity	Human, Mouse
Clonality	Polyclonal
Recommended application	WB, ELISA
Concentration	1 mg/ml
Full name	Ras-related protein Rab-40C
Synonyms	Ras-related protein Rab-40C ;Rar-like protein;Ras-like protein family member 8C;SOCS box-containing protein RAR3

This product is for research use only, not for use in human, therapeutic or diagnostic procedure.

Background

The SOCS box domain mediates the interaction with the Elongin BC complex, an adapter module in different E3 ubiquitin ligase complexes. Probable substrate-recognition component of a SCF-like ECS (Elongin-Cullin-SOCS-box protein) E3 ubiquitin ligase complex which mediates the ubiquitination and subsequent proteasomal degradation of target proteins. pathway: Protein modification; protein ubiquitination. Belongs to the small GTPase superfamily. Rab family. Contains 1 SOCS box domain. subunit: Component of the probable SCF-like ECS(RAB40C) E3 ubiquitin-protein ligase complex which contains CUL5, RNF7/RBX2, Elongin BC complex and RAB40C. Interacts with CUL5, RNF7, TCEB1 and TCEB2.

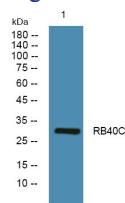
Recommended Dilution

WB: 1: 500 - 1: 2000

ELISA: 1: 5000 - 1: 20000

Not yet tested in other applications.

Images



Western blot analysis of lysates from SH-SY5Y cells, primary antibody was diluted at 1:1000, 4°C overnight

Storage

-20°C for 1 year