

ZBED6 Rabbit Polyclonal Antibody

Description

Product type	Primary Antibody
Code	BT-AP13622
Host	Rabbit
Isotype	IgG
Size	20ul, 50ul, 100ul
Immunogen	Synthesized peptide derived from human ZBED6
Mol wt	107690
Species reactivity	Human, Mouse
Clonality	Polyclonal
Recommended application	WB
Concentration	1 mg/ml
Full name	ZBED6
Synonyms	ZBED6

This product is for research use only, not for use in human, therapeutic or diagnostic procedure.

Background

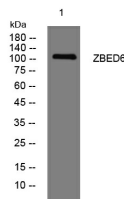
The protein encoded by this transposon-derived intronless gene is a transcriptional repressor that binds to the consensus sequence 5'-GCTCGC-3'. The encoded protein has been shown to repress IGF2 transcription. This gene is located within the first intron of the ZC3H11A gene.

Recommended Dilution

WB: 1: 500 - 1: 2000

Not yet tested in other applications.

Images



Western blot analysis of lysates from HEK293 cells, primary antibody was diluted at 1:1000, 4°C overnight

Storage

-20°C for 1 year

501 Changsheng S Rd, Nanhu Dist, Jiaxing, Zhejiang, China

Tel: 86 21 31007137 | E-mail: save@bt-laboratory.com | www.bt-laboratory.com