

ZDHC8 Rabbit Polyclonal Antibody

Description

| | |
|--------------------------------|--|
| Product type | Primary Antibody |
| Code | BT-AP13661 |
| Host | Rabbit |
| Isotype | IgG |
| Size | 20ul, 50ul, 100ul |
| Immunogen | Synthesized peptide derived from human ZDHC8 |
| Mol wt | N/A |
| Species reactivity | Human, Mouse |
| Clonality | Polyclonal |
| Recommended application | WB |
| Concentration | 1 mg/ml |
| Full name | ZDHC8 |
| Synonyms | ZDHC8; Probable palmitoyltransferase ZDHHC8; EC 2.3.1.-; Zinc finger DHHC domain-containing protein 8; DHHC-8; Zinc finger protein 378 |

This product is for research use only, not for use in human, therapeutic or diagnostic procedure.

Background

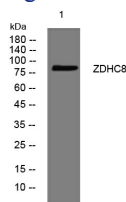
This gene encodes a four transmembrane protein that is a member of the zinc finger DHHC domain-containing protein family. The encoded protein may function as a palmitoyltransferase. Defects in this gene may be associated with a susceptibility to schizophrenia. Alternate splicing of this gene results in multiple transcript variants. A pseudogene of this gene is found on chromosome 22.

Recommended Dilution

WB: 1: 500 - 1: 2000

Not yet tested in other applications.

Images



Western blot analysis of lysates from A549 cells, primary antibody was diluted at 1:1000, 4°C overnight

Storage

-20°C for 1 year