

ZEP2 Rabbit Polyclonal Antibody

Description

Product type	Primary Antibody
Code	BT-AP13662
Host	Rabbit
Isotype	IgG
Size	20ul, 50ul, 100ul
Immunogen	Synthesized peptide derived from human ZEP2
Mol wt	269060
Species reactivity	Human, Mouse, Rat
Clonality	Polyclonal
Recommended application	WB
Concentration	1 mg/ml
Full name	ZEP2
Synonyms	ZEP2

This product is for research use only, not for use in human, therapeutic or diagnostic procedure.

Background

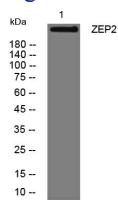
This gene encodes a member of a family of closely related| large| zinc finger-containing transcription factors. The encoded protein regulates transcription by binding to regulatory regions of various cellular and viral genes that maybe involved in growth| development and metastasis. The protein contains the ZAS domain comprised of two widely separated regions of zinc finger motifs| a stretch of highly acidic amino acids and a serine/threonine-rich sequence.

Recommended Dilution

WB: 1: 500 - 1: 2000

Not yet tested in other applications.

Images



Western blot analysis of lysates from VEC cells, primary antibody was diluted at 1:1000, 4°C overnight

Storage

-20°C for 1 year